

MQZ25 PRODUCT SPECIFICATION



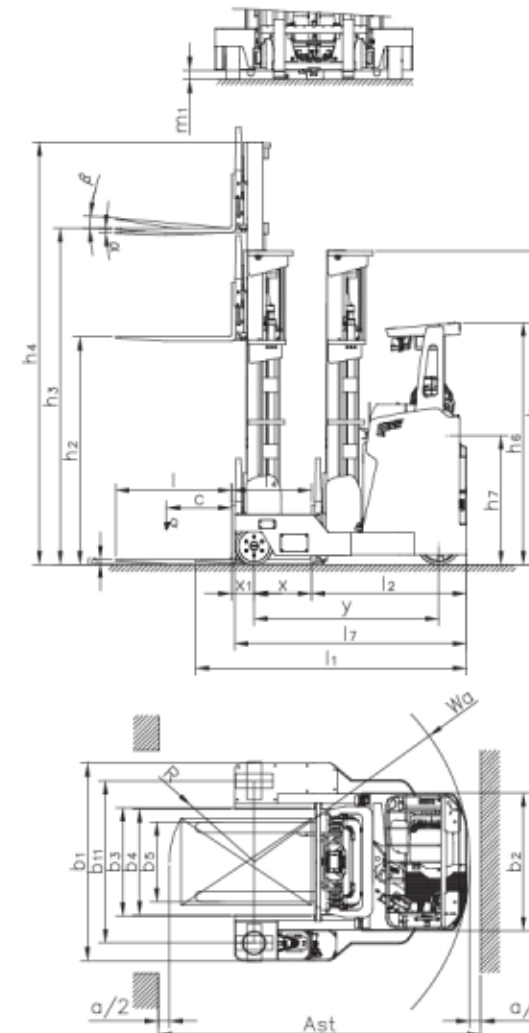
Standard			
1.1	Brand		MiMA
1.2	Model		MQZ25SQ
1.3	Power type		Battery
1.4	Operation type		Seated type
1.5	Rated capacity	Q(kg)	2500
1.6	Load center	C(mm)	600
1.7	Distance from front end face of fork to center of carrier	x(mm)	527
1.8	Front overhang	x1(mm)	220
1.9	Wheelbase	y(mm)	1700
Weight			
2.1	Service weight(incl.battery)	kg	5050
2.2	Axle capacity with no load, drive side/load side	kg	/
2.3	Axle capacity with full load, fork forward, drive side/load side	kg	/
2.4	Axle capacity with full load, fork backward, drive side/load side	kg	/
Wheel			
3.1	Wheel type ,drive side/load side		PU/PU
3.2	Load wheel size	mm	φ 343×130
3.3	Drive wheel size	mm	φ 400×160
3.4	Number of wheels, front/rear(x=drive wheel)		2/1X
3.5	Wheel tread, load side	b11(mm)	1493
Size			
4.1	Fork tilt, forward/backward	α / β (°)	3/5
4.2	Mast closed height	h1(mm)	4329
4.3	Free lift height	h2(mm)	3522[1]
4.4	Lift height	h3(mm)	10000
4.5	Max. mast extended height with load-backrest	h4(mm)	10975
4.6	Overhead guard height	h6(mm)	2230
4.7	Seat height	h7(mm)	1186
4.8	Overall length	l1(mm)	2500
4.9	Overall width	b1/b2(mm)	1820/1270
4.10	Fork size	l/e/s(mm)	1070×122×40
4.11	Shelf width	b3(mm)	1088
4.12	Fork outside width	b5(mm)	246-758
4.13	Inner leg width	b4(mm)	977
4.14	Reach stroke	l4(mm)	743
4.15	Mast ground clearance	m1(mm)	75
4.16	Side driving aisle width (1700x1500)	Ast(mm)	2665
4.17	Turning radius	Wa(mm)	1988
Performance			
5.1	Driving speed(load/unload)	km/h	8.5/10
5.2	Lifting speed(load/unload)	mm/s	260/360
5.3	Lowering speed(load/unload)	mm/s	300/250
5.4	Max. gradeability(load/unload)(S2-5min)	%(tan θ)	≤10
5.5	Brake type		Electromagnetic
Drive			
6.1	Driving motor(S2-60min)	kw	7
6.2	Lifting motor(S3-15%)	kw	15
6.3	Battery voltage/capacity	V/Ah	48/560
6.4	Battery weight	kg	921
Other			
7.1	Drive control mode		AC

MQZ25 MAST SPECIFICATION

Triplex full free Mast										
Model	MQZ	25-45	25-50	25-55	25-60	25-65	25-70	25-72	25-75	25-80
Lift height	h3(mm)	4500	5000	5500	6000	6500	7000	7200	7500	8000
Max. mast extended height with load backrest	h4(mm)	5475	5975	6475	6975	7575	7970	8170	8470	8970
Mast closed height	h1(mm)	2395	2562	2728	2895	3062	3228	3295	3395	3662
Free lift height	h2(mm)	1590	1756	1924	2090	2256	2424	2490	2590	2856

Triplex full free Mast					
Model	MQZ	25-85	25-90	25-95	25-100
Lift height	h3(mm)	8500	9000	9500	10000
Max. mast extended height with load backrest	h4(mm)	9470	9970	10470	10970
Mast closed height	h1(mm)	3829	3995	4162	4329
Free lift height	h2(mm)	3022	3190	3356	3522

MQZ25 PRODUCT SIZE



LORD CHART

