



**Schindler 9300AE**  
Simplicity Means Attention to Detail.





# Schindler 9300 Advanced Edition Moving Up to a New Level

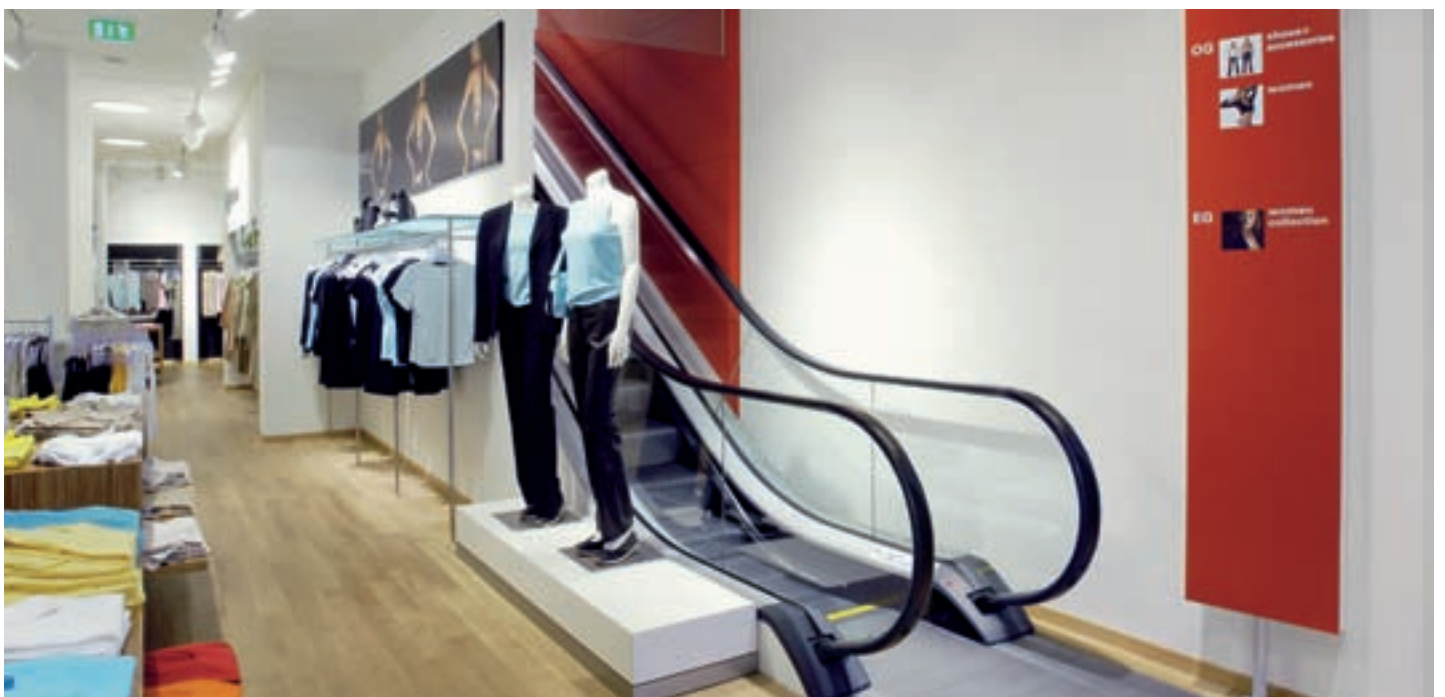
Sleek and stylish Schindler 9300 Advanced Edition escalators are at home in any environment. The new generation builds on proven Schindler quality and reliability while offering greater versatility than ever before. Two efficient configuration packages are now available to give you the precise level of customization your project requires:

## **Economical**

The Schindler 9300AE Standard package of pre-engineered solutions covers the most common customer specifications and delivers optimal price/performance.

## **Unique**

The Schindler 9300AE Custom package maximizes your possibilities. A wide range of pre-engineered and individualized solutions using robust components gives us the flexibility to meet customer needs in both commercial and public transportation applications with a rise of up to 13 meters.



# Core Benefits

Built to the highest standards of excellence, the new Schindler 9300AE gives you the best value and performance for the most common customer specifications. The new generation builds on Schindler's proven standards of style, quality and safety.

## Style

Streamlined elegance is never out of place. From the structural elements to the materials and finishes, the details of the Schindler 9300AE have been integrated into one harmonious whole that is at home in any commercial environment. The option range of the Schindler 9300AE Custom makes fully individualized configurations possible that will fit in with any architectural design.

## Quality

All Schindler 9300AE units are pre-engineered using cutting-edge technology components to provide the highest levels of quality and reliability. Part of an integrated worldwide manufacturing network, all Schindler plants and processes are fully ISO certified.

## Safety

No margin for error. All Schindler 9300AE escalators comply with all local and international safety standards, including EN 115. Every unit comprises over twenty important safety features.

## Efficiency

With Schindler you have a choice of three optional energy-saving packages:

ECOLINE Competence to generate energy savings of up to 20%, ECOLINE Plus to provide stop-&-go operation or ECOLINE Premium offering the advantages of crawling speed and peak current reduction thanks to a built-in frequency converter.



# Style

From the structural elements to the materials, finishes and colors, an optimized range of standard variants and options ensures the aesthetic harmonization of a Schindler 9300 Advanced Edition escalator with any commercial environment.

## The Balustrade

The slim, transparent balustrade design of the Schindler 9300 Advanced Edition is marked by classic grace. The stainless steel balustrade profile provides maximum durability.

## Claddings

Attractive claddings and deckings are crucial to creating a positive impression. Standard solutions are available in scratch-resistant, powder-coated aluminum or brushed stainless steel, our deckings are as good-looking as they are robust.

## Lighting

Sophisticated lighting options add substantial visual impact and reduce the risk of trapping. Durable, vandal-resistant "LED" skirt lighting uses light-emitting diode technology to eye-catching effect.

## Steps

Steps are a major safety factor. Defying industry trends, Schindler manufactures this core component in-house in order to guarantee a high level of safety and design. The Schindler 9300AE features aluminum compact steps.

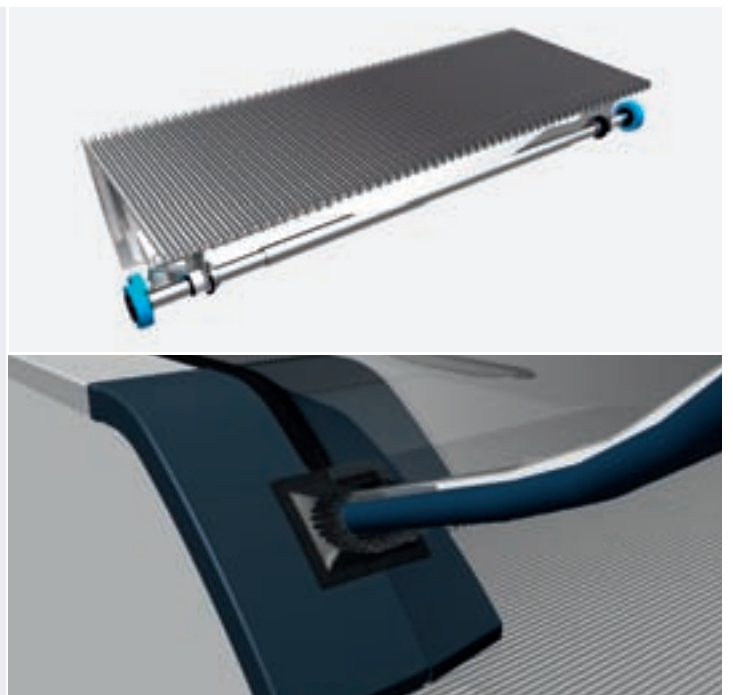


# Safety & Quality

Schindler's global-scale commitment to passenger safety never wavers: Schindler 9300 Advanced Edition escalators satisfy the same strict safety criteria from continent to continent. What's more, Schindler redefines industry standards. Every one of our units includes more than twenty important safety features – made possible thanks to Schindler's high-grade components and dependable system engineering.

- An additional safeguard against accidents on crowded escalators is the Schindler band brake. No other brake on the market matches its reliability and long service life. The braking torque is automatically adapted to the direction of travel. Its reduction to one third during the ascent slows down the braking effect.

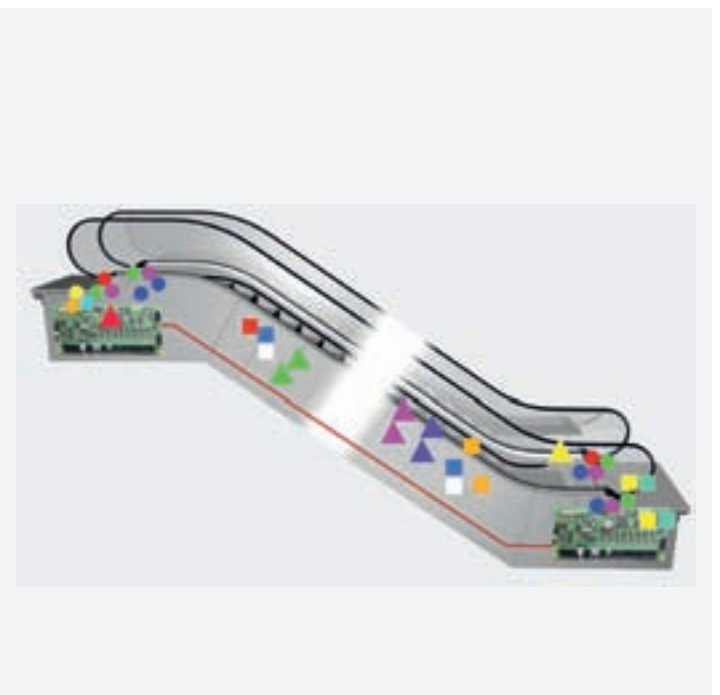
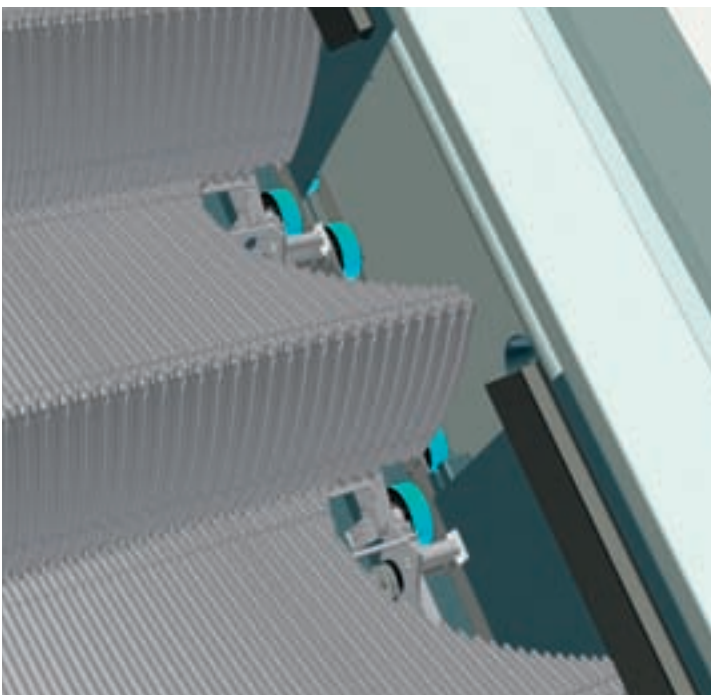
- Continuous step axles linking the two step chains enhance safety by absorbing the bending stresses of the step band.
- Brushes keep children's fingers away from the handrail entry area, which is also equipped with a safety contact to shut down the unit.



**Every Schindler Escalator Offers the Highest Level of Safety**

- Doubling your assurance of security through dual processor control is our advanced MICONIC F4, which oversees the operation of your escalator. Two independent microprocessors, “master” and “slave,” cross-reference with each other to keep tabs on all operating parameters.
- User safety is maximized by a unique skirt design that offers optimal protection against wedging. The skirting is rigidly reinforced with C-rails on the back and is provided with anti-friction coating on the front to prevent shoes and other foreign objects from becoming trapped between the steps and the skirt panels. Well-designed optional skirt brushes further reduce the risk of wedging. The Schindler skirting has proved its durability and easy maintenance in many existing installations.

- Schindler’s unique step guiding system further decreases the risk of wedging by ensuring that the distance between the skirting and the step is consistently kept to a minimum.



# Efficiency

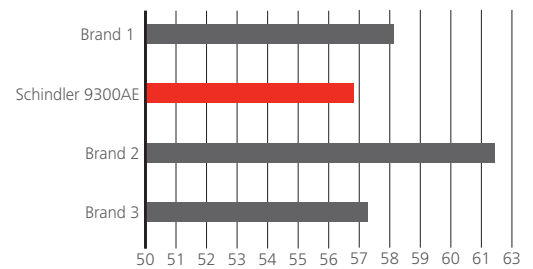
If the name of the game is efficiency, Schindler 9300 Advanced Edition escalators easily fulfill the highest expectations. Every feature is designed to meet the need for quiet, cost-effective operation.

- Exceptionally quiet running is a result of Schindler's industry-unique combination of a 6-pole motor with the Schindler reduction gear. This low-speed motor produces significantly less noise than a 4-pole motor.

## Whatever Your Energy Goals, Schindler Helps You Achieve Them

- All new installations have remote monitoring capability to determine the operating state round the clock. In the event of a stoppage, immediate diagnosis enables fast response and return to service.
- To keep energy costs down, every Schindler 9300 Advanced Edition escalator has an optimized drive system that is perfectly matched to the demands of the rise. Nominal motor power drops by as much as 27% compared with earlier escalator models.

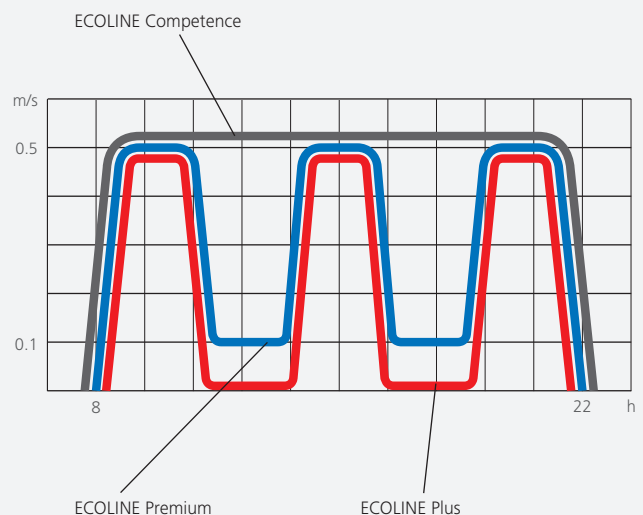
- With Schindler you have a choice of three optional energy-saving packages. Schindler's ECO energy-saving system for higher rises, starting current reduction and soft start/soft stop functionality are all included in the ECOLINE Competence package and can generate energy savings of up to 20%. ECOLINE Plus provides for stop-&-go operation when passenger flow is discontinuous. ECOLINE Premium offers the advantages of crawling speed and peak current reduction thanks to a built-in frequency converter.



The Schindler 9300AE Custom is quieter in operation than other leading commercial escalator brands



Three Packages to Save Energy





# Value-Added Tools

## Design Your Own Escalator – Online

SchindlerDraw is a fast, efficient and powerful tool wthat saves hours of drawing time on scaled layouts. Based on ready-to-use specifications, it is an indispensable planning aid, tailoring drawings to each individual project.

## New Features and Functions – Now With 3-D

SchindlerDraw is an automated interactive CAD program for Schindler escalators. This unique service was first launched by Schindler in 1995 and has become an industry benchmark.

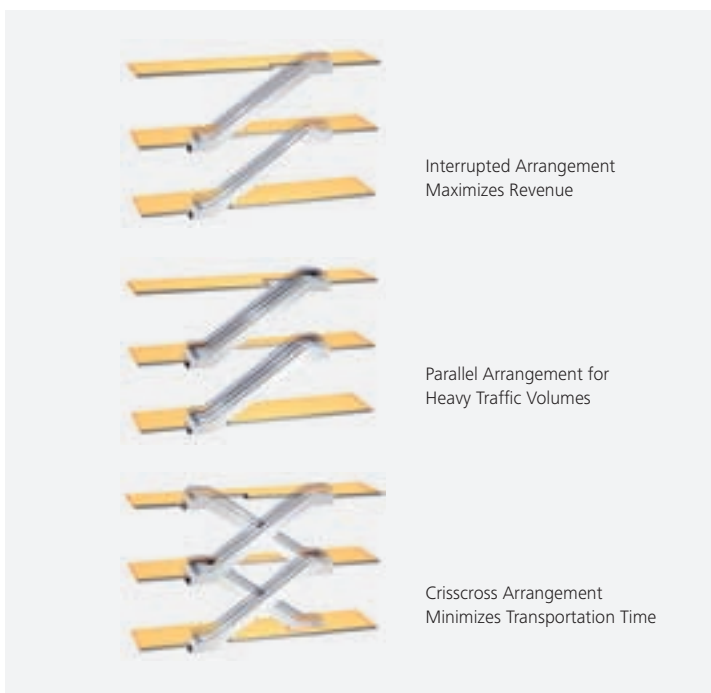
New features include:

- On-screen pdf drawing – print and download immediately
- AutoCAD drawings
- 3-D layout visualizations
- Traffic analysis
- Escalator specifications ready for tender documents

## How

As the program is accessed online free of charge, there's no software to download. Simply log in to SchindlerDraw, register, then click to open the Escalator Project Center, your own personal work center for creating, saving, opening or downloading escalator drawings.

[www.schindlerdraw.com](http://www.schindlerdraw.com)



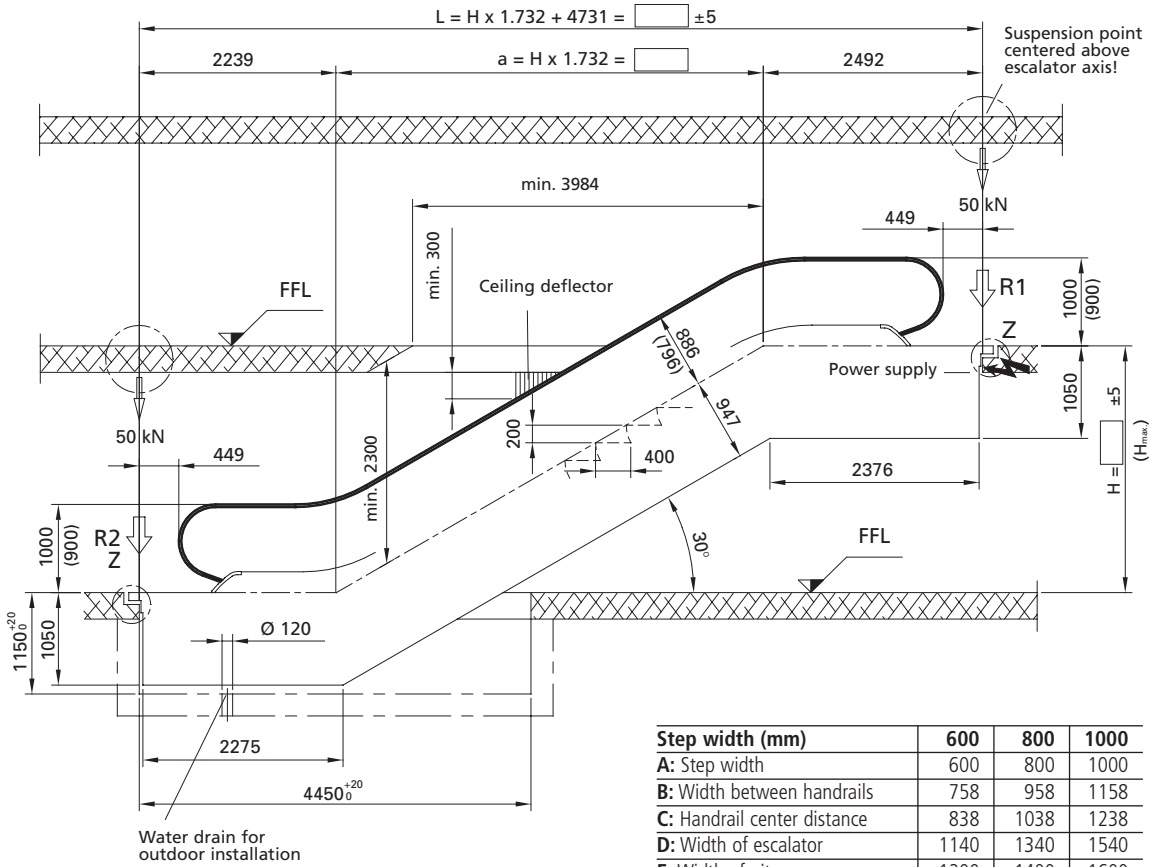
# Schindler 9300 Advanced Edition

## Type 10 · 30°-K

**Rise:** max. 6 m at a step width of 1000 mm  
**Balustrade:** design E  
**Balustrade height:** 900/1000 mm

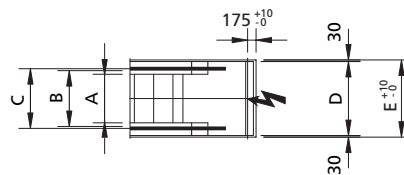
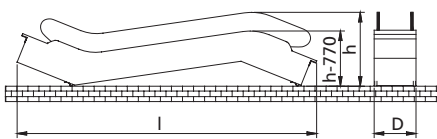
**Inclination:** 30°  
**Step width:** 600/800/1000 mm  
**Step run:** 2 horizontal steps

*All dimensions in mm.  
 Observe national regulations!  
 Subject to changes.*



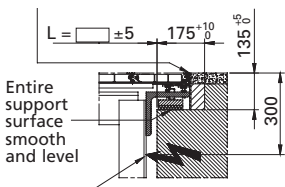
Step width (mm)	600	800	1000
<b>A:</b> Step width	600	800	1000
<b>B:</b> Width between handrails	758	958	1158
<b>C:</b> Handrail center distance	838	1038	1238
<b>D:</b> Width of escalator	1140	1340	1540
<b>E:</b> Width of pit	1200	1400	1600
<b>H<sub>max</sub>:</b> Maximum rise	6000	6000	6000

### Transportation dimensions



### Detail Z

Gaps at joints to be filled with joint filler (by customer)



Entire support surface smooth and level  
 Inlet for lighting and power circuits centered at upper end, through front face

Step width A mm	Rise H mm	Weight kN	Support loads		Transp. dimensions Balustrade height 1000	
			R1 kN	R2 kN	h	l
600	3000	52	44	38	2740	10860
	3500	56	47	41	2760	11850
	4000	59	50	44	2780	12840
	4500	62	53	47	2800	13840
	5000	65	56	50	2820	14830
	5500	69	58	53	2830	15830
800	6000	72	61	56	2840	16820
	3000	55	50	45	2740	10860
	3500	59	54	48	2760	11850
	4000	62	57	52	2780	12840
	4500	66	61	55	2800	13840
	5000	69	64	58	2820	14830
1000	5500	73	68	62	2830	15830
	6000	76	71	65	2840	16820
	3000	59	57	51	2740	10860
	3500	62	61	55	2760	11850
	4000	66	65	59	2780	12840
	4500	70	69	63	2800	13840
	5000	73	73	67	2820	14830
	5500	85	82	74	2830	15830
	6000	89	86	79	2840	16820

# Schindler 9300 Advanced Edition

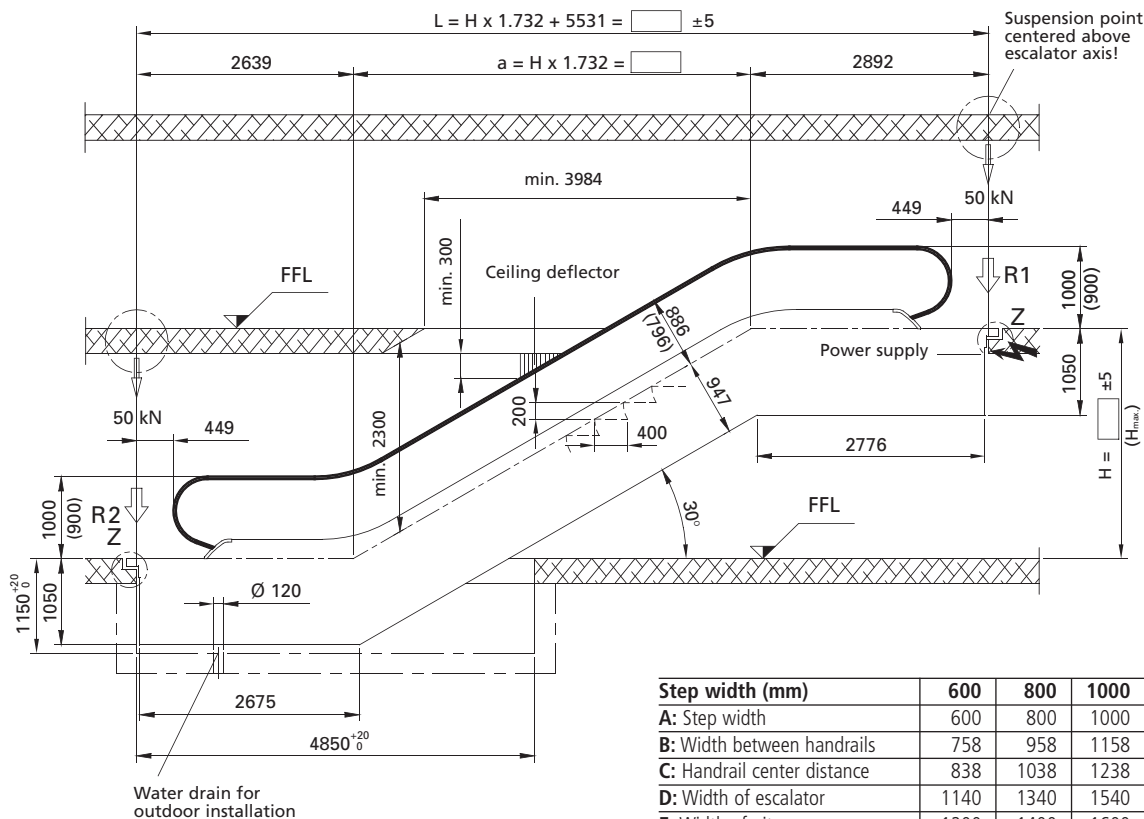
## Type 10 · 30°-M

**Rise:** max. 8 m at a step width of 1000 mm  
**Balustrade:** design E  
**Balustrade height:** 900/1000 mm

**Inclination:** 30°  
**Step width:** 600/800/1000 mm  
**Step run:** 3 horizontal steps

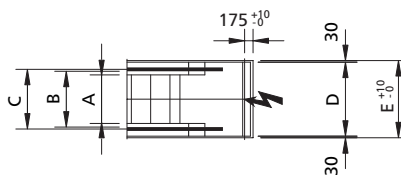
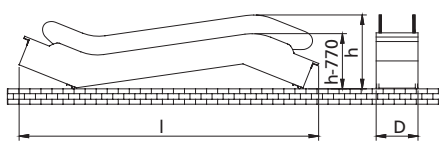
1) If  $L > L_{max.}$ , an intermediate support may be required; please consult Schindler.  
 2) Delivery in 2 parts.

All dimensions in mm.  
 Observe national regulations!  
 Subject to changes.



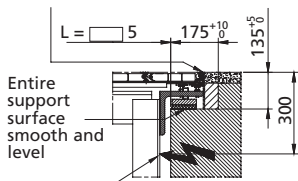
Step width (mm)	600	800	1000
<b>A:</b> Step width	600	800	1000
<b>B:</b> Width between handrails	758	958	1158
<b>C:</b> Handrail center distance	838	1038	1238
<b>D:</b> Width of escalator	1140	1340	1540
<b>E:</b> Width of pit	1200	1400	1600
$L_{max.}^{1)}$ : Limiting span length	19300	17600	16200
$H_{max.}$ : Maximum rise	12000	9300	8000

### Transportation dimensions



### Detail Z

Gaps at joints to be filled with joint filler (by customer)



Inlet for lighting and power circuits centered at upper end, through front face

Step width A mm	Rise H mm	Weight kN	Support loads		Transp. dimensions Balustrade height 1000	
			R1 kN	R2 kN	h	l
600	3000	58	48	42	2850	11610
	3500	61	51	45	2880	12590
	4000	65	54	48	2910	13580
	4500	68	57	51	2930	14570
	5000	72	60	54	2950	15570
	5500	75	63	57	2970	16560
800	6000	78	66	60	2)	2)
	3000	61	55	49	2850	11610
	3500	65	58	53	2880	12590
	4000	68	62	56	2910	13580
	4500	72	65	60	2930	14570
	5000	76	69	63	2950	15570
1000	5500	82	74	68	2970	16560
	6000	86	78	72	2)	2)
	3000	65	62	56	2850	11610
	3500	69	66	61	2880	12590
	4000	73	70	65	2910	13580
	4500	79	76	70	2930	14570
	5000	83	80	74	2950	15570
	5500	90	87	79	2970	16560
	6000	94	91	83	2)	2)

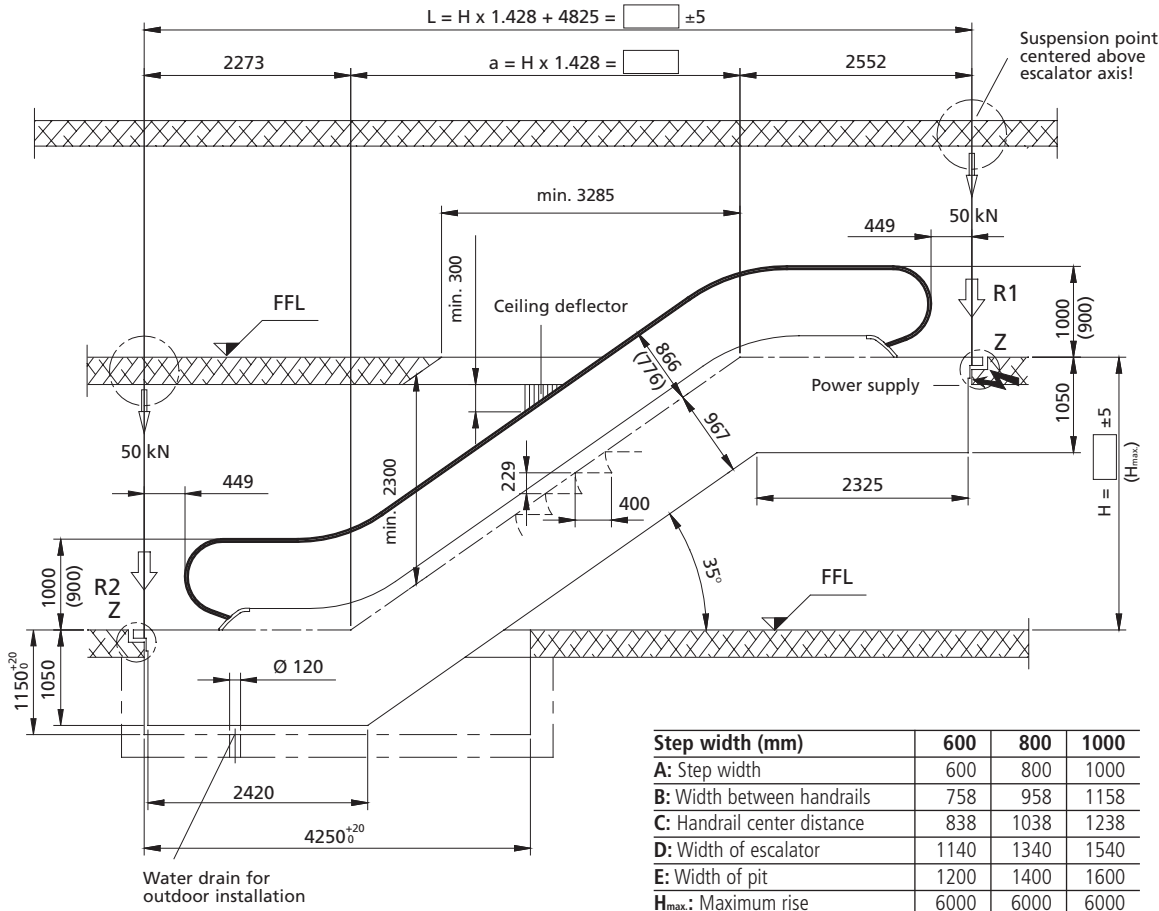
# Schindler 9300 Advanced Edition

## Type 10 · 35°-K

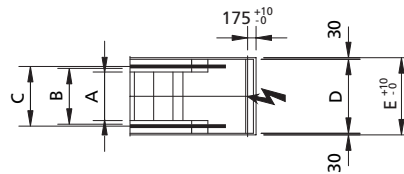
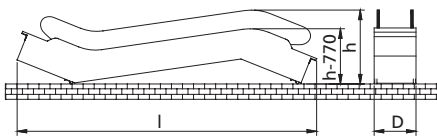
**Rise:** max. 6 m at a step width of 1000 mm  
**Balustrade:** design E  
**Balustrade height:** 900/1000 mm

**Inclination:** 35°  
**Step width:** 600/800/1000 mm  
**Step run:** 2 horizontal steps

All dimensions in mm.  
 Observe national regulations!  
 Subject to changes.

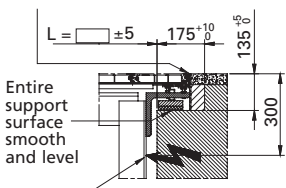


### Transportation dimensions



### Detail Z

Gaps at joints to be filled with joint filler (by customer)



Inlet for lighting and power circuits centered at upper end, through front face

Step width A mm	Rise H mm	Weight kN	Support loads		Transp. dimensions Balustrade height 1000	
			R1 kN	R2 kN	h	l
600	3000	49	41	35	2820	10110
	3500	52	44	38	2850	10960
	4000	55	46	40	2880	11820
	4500	58	49	43	2900	12680
	5000	60	51	45	2910	13540
	5500	63	53	48	2930	14400
800	6000	66	56	50	2940	15270
	3000	52	47	41	2820	10110
	3500	55	50	44	2850	10960
	4000	58	53	47	2880	11820
	4500	61	56	50	2900	12680
	5000	64	59	53	2910	13540
1000	5500	67	62	56	2930	14400
	6000	70	65	59	2940	15270
	3000	55	53	47	2820	10110
	3500	58	57	51	2850	10960
	4000	62	60	54	2880	11820
	4500	65	63	58	2900	12680
	5000	68	67	61	2910	13540
	5500	71	70	64	2930	14400
	6000	83	79	71	2940	15270





**Disclaimer**

The specifications, options and colors expressed within this brochure are indicative only and are subject to change without notice. They are not intended to, and do not, constitute an offer on the part of the Schindler Group.



# Schindler

## Reliable, moving, trailblazing

For generations, Schindler has been providing the finest elevator and escalator technology to architects and builders around the world.

The company was founded in Switzerland in 1874, and has grown to become the world's second largest elevator and escalator manufacturer, operating in more than 100 countries worldwide.

For further information including location of the Schindler office nearest you, please visit:

**[www.schindler.com](http://www.schindler.com)**