

2500/2820





HMF 2500/2820 Series

- A Strong Loader Series from HMF in the 25-28 tm Range with up to 8 Hydraulic Extensions

2500/2820



Front page:
Hose guide for extra function hoses - in this picture fitted to a Fly-Jib - a sturdy and compact device protected by a nylon drag chain.

A Popular Loader from HMF in the 25 tm Range

The HMF 2500 Series is developed for users requiring a strong loader with a long reach, and since being released, it has become one of HMF's most popular loader series in the heavy end of the range.

The 2500 Series is available with up to 8 hydraulic extensions, the K8 version offers a max. hydraulic reach of 21.2 m and a lifting capacity of 460 kg. If you want an even longer reach, the HMF 2500 Series is available with manual extensions, increasing the reach to 26.0 m with a corresponding lifting capacity of 310 kg (the K8 version).

HDL and Fly-Jib increase Your Flexibility

The HMF 2820 Series is the HDL version of the 2500 Series. With the HDL-system (Heavy Duty Lifting) the lifting capacity is increased by more than 10%, and in certain lifting areas, more than 20%. In the K8 version, the 2820 HMF Series has a lifting capacity of 575 kg at 21.2 m.

If you require a longer reach than that of the HMF 2820 standard Series, you may choose to equip the loader with a Fly-Jib. The max. hydraulic reach with the Fly-Jib is 24.7 metres, and with manual extensions on the Fly-Jib, the max. out-reach of the 2820 Series is 28.2 metres lifting 250 kg.



The most recent feature from HMF is the development of a very strong Fly-Jib, the FJ900, for

the 2820-K3 and K4. It is available with up to 4 hydraulic extensions, having a lifting capacity of 475 kg. at a max. hydraulic reach of 21.2 m. Contact us regarding the most suitable combination for your tasks.

Also contact us regarding the wide range of optional extras for the 2500 and 2820 Series.

The HMF 2820 Series has a max. lifting capacity of more than 10 tonnes!

If you have a need to make heavy close-range lifts, the 2500 and 2820 Series offer you both high lifting capacity and increased hook height in the



working area close to the loader column. For example the hook height in the K1 version of both the 2500 and the 2820 is 2.7 m at a 1 metre radius. In the inner hook suspension at 2.3 metres, the lifting capacity is 9,500 kg and 10,350 kg for the 2500 and 2820 Series respectively.

HMF's Popular Safety System - RCL 5200

Like all new loaders from HMF, the 2500 and 2820 Series are equipped with HMF's new user-friendly RCL 5200 Safety System in the EU countries. This simple and flexible system has become popular because it helps you limit operating and repair costs. The controller constantly monitors the load moment and operation of the loader, thus avoiding overload situations that lead to unnecessary wear and tear. The RCL 5200 is designed to enable you to operate the loader without overload situations occurring.



The fewer times the loader is working over 100% capacity, the less wear and tear and the longer life span!

(The RCL System is an optional extra in countries outside the EU)

The 2500 and 2820 Series are characterized by the well-known HMF advantages: strength, simplicity and efficiency. They are simple to use, have an easy maintenance and are made for many years' of demanding work.



▲ The HMF 2500 Series has a max. hydraulic reach of 21.2 m (the K8 version). At this distance you are able to handle weights of up to 460 kg.

If you have many tasks where you need the complete reach of the loader for lifting vertically, it will be an advantage to equip the HMF 2500 and 2820 Series with a winch, because this multiplies the working speed and you obtain a vertical lift with increased precision for mounting and fitting tasks.

As a part of the wide range of optional extras for the HMF 2500 and 2820 Series, the loader



is available with remote control. This gives you a safe view in situations where you cannot place the truck close to the working area. It also allows you to position the load personally, even when the reach is increased with a Fly-Jib.

Technical Data



HMf 2500 Series

| Loading group B3 | | 2503-K1 | 2503-K2 | 2503-K3 | 2503-K4 | 2503-K5 | 2503-K6 | 2503-K7 | 2503-K8 |
|----------------------------------|-------|---------|---------|---------|---------|---------|---------|---------|---------|
| Load moment | tm | 24.9 | 24.4 | 23.3 | 22.7 | 22.3 | 21.8 | 21 | 20.5 |
| Hydraulic reach | m | 6.3 | 8.3 | 10.4 | 12.5 | 14.7 | 16.9 | 19.1 | 21.2 |
| Slewing angle | ° | 420 | 420 | 420 | 420 | 420 | 420 | 420 | 420 |
| Slewing torque | kgm | 3350 | 3350 | 3350 | 3350 | 3350 | 3350 | 3350 | 3350 |
| Height above chassis | mm | 2355 | 2355 | 2355 | 2355 | 2355 | 2355 | 2355 | 2355 |
| Width, folded | mm | 2500 | 2500 | 2500 | 2500 | 2500 | 2500 | 2500 | 2500 |
| Length of base, no extra valves | mm | 1060 | 1060 | 1060 | 1060 | 1060 | 1060 | 1125 | 1125 |
| Length of base with extra valves | mm | 1175 | 1175 | 1175 | 1175 | 1175 | 1175 | - | - |
| Stabilizer spread, standard | mm | 6200 | 6200 | 6200 | 6200 | 6200 | 6200 | 6200 | 6200 |
| Weight excl. stabilizers | kg | 2375 | 2630 | 2850 | 3060 | 3260 | 3450 | 3600 | 3725 |
| Weight of stabilizers, standard | kg | 475 | 475 | 475 | 475 | 475 | 475 | 475 | 475 |
| Working pressure | MPa | 28.5 | 28.5 | 28.5 | 28.5 | 28.5 | 28.5 | 28.5 | 28.5 |
| Pump performance | l/min | 65 | 65 | 65 | 65 | 65 | 65 | 65 | 65 |
| Oil tank capacity, sep. tank | l | 160 | 160 | 160 | 200 | 200 | 200 | 200 | 200 |
| Power consumption | kW | 31 | 31 | 31 | 31 | 31 | 31 | 31 | 31 |
| Hook height 1 m from column | m | 2.70 | 2.64 | 2.56 | 2.48 | 2.40 | 2.32 | 2.25 | 2.18 |

HMf Serie 2820

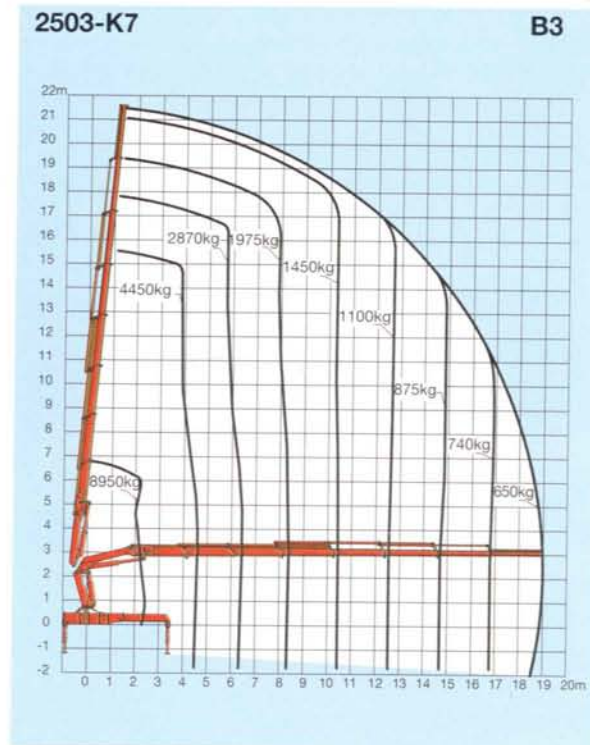
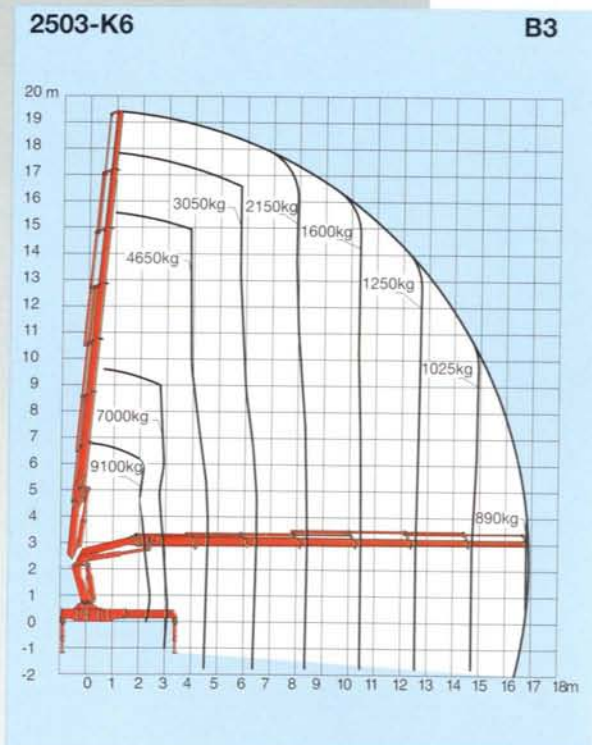
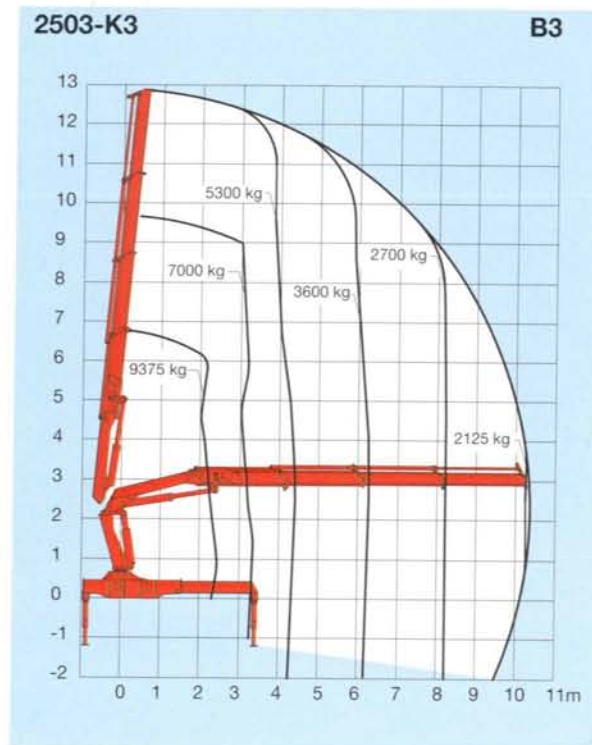
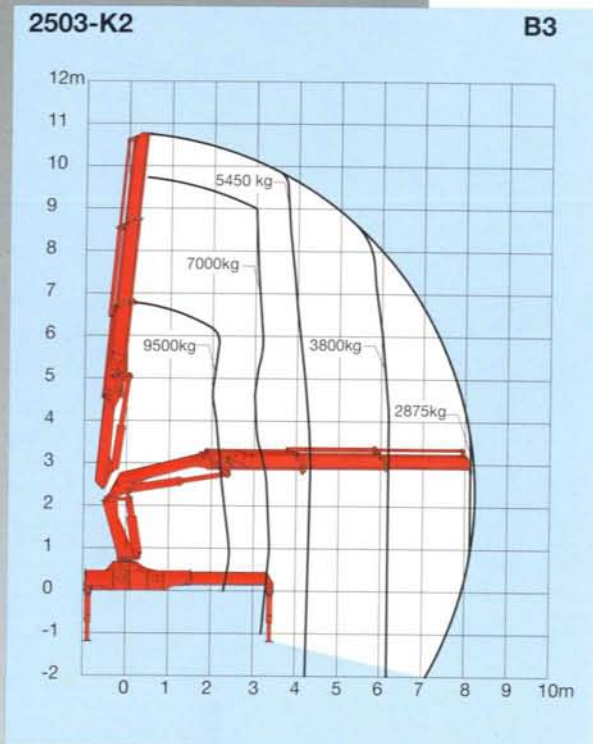
| Loading group B3 | | 2823-K1 | 2823-K2 | 2823-K3 | 2823-K4 | 2823-K5 | 2823-K6 | 2823-K7 | 2823-K8 |
|----------------------------------|-------|---------|---------|---------|---------|---------|---------|---------|---------|
| Load moment | tm | 27.3 | 26.8 | 25.7 | 25.2 | 24.7 | 24.3 | 23.5 | 22.8 |
| Hydraulic reach | m | 6.3 | 8.3 | 10.4 | 12.5 | 14.7 | 16.9 | 19.1 | 21.2 |
| Slewing angle | ° | 420 | 420 | 420 | 420 | 420 | 420 | 420 | 420 |
| Slewing torque | kgm | 3350 | 3350 | 3350 | 3350 | 3350 | 3350 | 3350 | 3350 |
| Height above chassis | mm | 2355 | 2355 | 2355 | 2355 | 2355 | 2355 | 2355 | 2355 |
| Width, folded | mm | 2500 | 2500 | 2500 | 2500 | 2500 | 2500 | 2500 | 2500 |
| Length of base, no extra valves | mm | 1060 | 1060 | 1060 | 1060 | 1060 | 1060 | 1125 | 1125 |
| Length of base with extra valves | mm | 1175 | 1175 | 1175 | 1175 | 1175 | 1175 | - | - |
| Stabilizer spread, standard | mm | 6200 | 6200 | 6200 | 6200 | 6200 | 6200 | 6200 | 6200 |
| Weight excl. stabilizers | kg | 2375 | 2630 | 2850 | 3060 | 3260 | 3450 | 3600 | 3725 |
| Weight of stabilizers, standard | kg | 475 | 475 | 475 | 475 | 475 | 475 | 475 | 475 |
| Working pressure | MPa | 31 | 31 | 31 | 31 | 31 | 31 | 31 | 31 |
| Pump performance | l/min | 65 | 65 | 65 | 65 | 65 | 65 | 65 | 65 |
| Oil tank capacity, sep. tank | l | 160 | 160 | 160 | 200 | 200 | 200 | 200 | 200 |
| Power consumption | kW | 33 | 33 | 33 | 33 | 33 | 33 | 33 | 33 |
| Hook height 1 m from column | m | 2.70 | 2.64 | 2.56 | 2.48 | 2.40 | 2.32 | 2.25 | 2.18 |

HMf 2820 with Fly-Jib

| | | 2823-K4 FJ900-K4 | 2823-K5 FJ5-K3 | 2823-K6 FJ5-K3 |
|---|------|--|---|---|
| Hydraulic reach | m | 22.2 | 22.6 | 24.8 |
| Hydraulic telescopic movement, FJ | mm | 6600 | 4950 | 4950 |
| Out-reach with manual extension | m | 26.0 | 26.1 | 28.2 |
| Lifting capacity, hydraulic (inner boom, 14 degrees above horizontal) | kg-m | 760-15.5 660-17.2 600-18.8 525-20.5 475-22.1 | 675-17.6 600-19.2 550-20.9 470-22.5 - | 425-19.7 365-21.4 330-23.0 305-24.7 - |
| Lifting capacity, manual extension (inner boom, 14 degrees above horizontal) | kg-m | 400-24.0 300-25.9 | 360-24.2 280-25.9 | 280-26.4 250-28.1 |
| Height above chassis | mm | 2660 | 2635 | 2635 |
| Weight | kg | 725 | 500 | 480 |

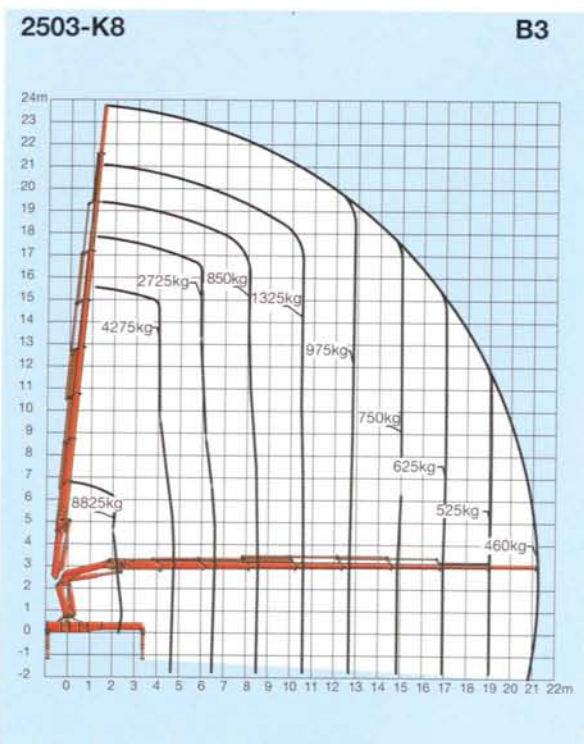
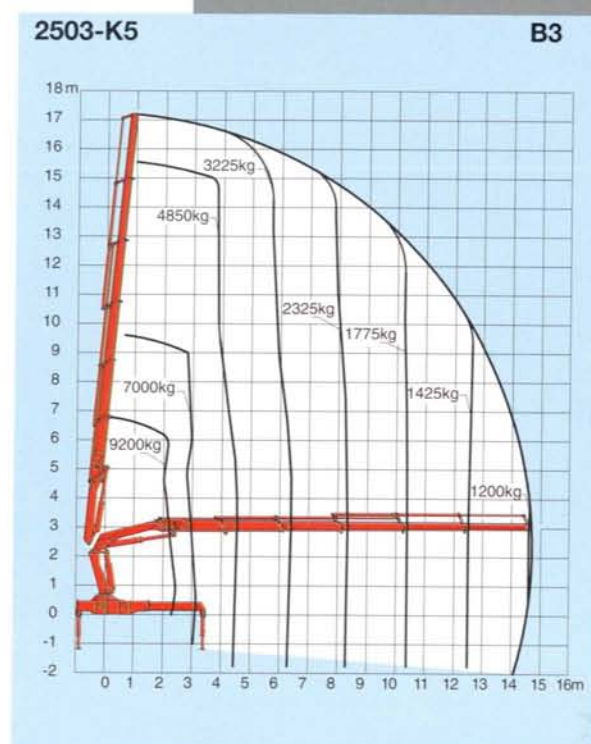
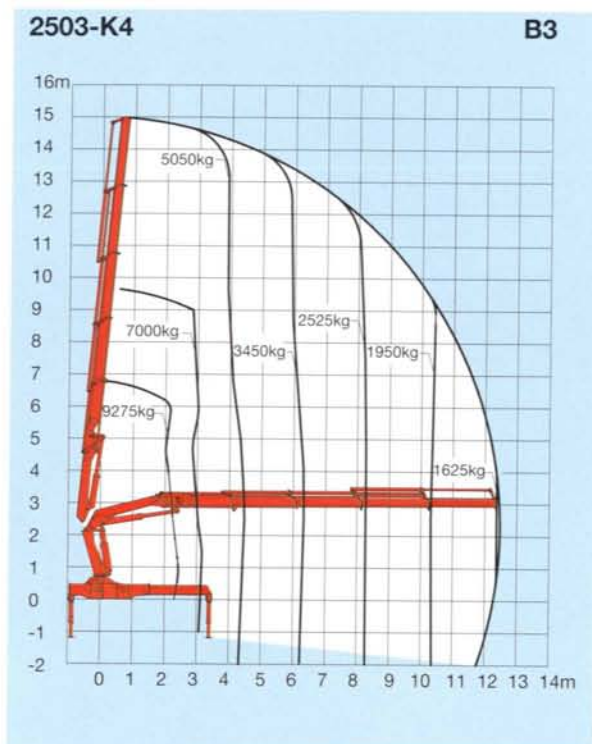


Lifting Capacity Diagram



HMF is well-known for its precise and user-friendly control valves, and the HMF 2500 and 2820 Series are available as standard with HMF's popular safety system RCL 5200 (standard within the EU).

Load capacities HMF 2500 Series



| Model | KG | M |
|---------|---|---|
| 2503-K2 | 5550, 3850, 2925 | 4.4, 6.2, 8.2 |
| 2503-K3 | 5300, 3600, 2700, 2125 | 4.4, 6.3, 8.3, 10.3 |
| 2503-K4 | 5075, 3450, 2525, 1950, 1625, 1250, 1000, 800, 650 | 4.5, 6.4, 8.3, 10.4, 12.4, 14.7, 16.8, 19.1, 21.3 |
| 2503-K5 | 4850, 3225, 2325, 1775, 1425, 1200, 925, 750, 600, 500 | 4.6, 6.4, 8.4, 10.4, 12.5, 14.6, 16.8, 19.1, 21.3, 23.7 |
| 2503-K6 | 4650, 3050, 2150, 1600, 1250, 1025, 890, 675, 560, 450, 375 | 4.7, 6.5, 8.4, 10.5, 12.5, 14.7, 16.8, 19.1, 21.3, 23.7, 26.2 |
| 2503-K7 | 4450, 2870, 1975, 1450, 1100, 875, 740, 650, 500, 410, 330 | 4.7, 6.6, 8.5, 10.6, 12.6, 14.8, 16.9, 19.0, 21.3, 23.6, 26.1 |
| 2503-K8 | 4275, 2725, 1850, 1325, 975, 750, 625, 525, 460, 385, 310 | 4.8, 6.7, 8.6, 10.7, 12.7, 14.9, 17.0, 19.1, 21.2, 23.5, 26.0 |

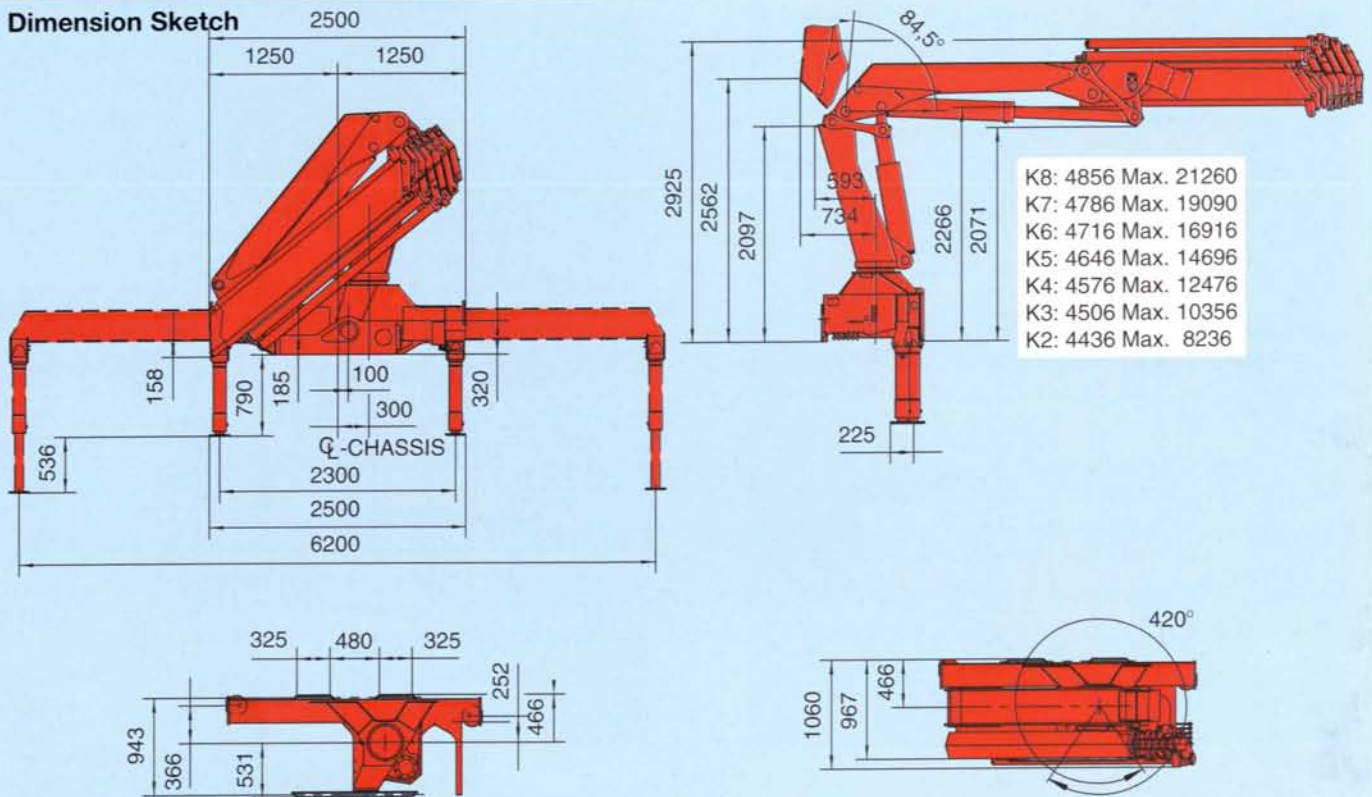
* Lifting capacity, no manual extensions



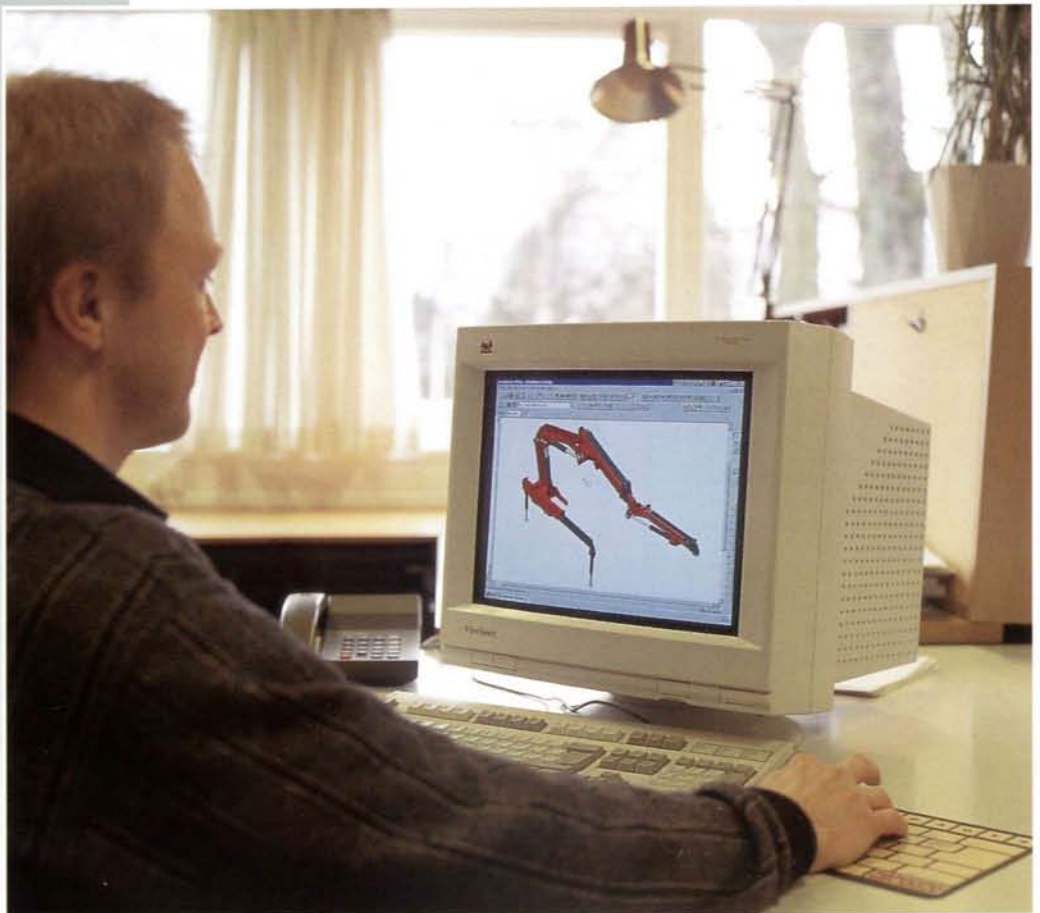
The HMF 2500 and 2820 Series are also available so that operation of the stabilizer legs can be done on both sides. They can also be equipped with inductive sensors meaning that you can only work with the loader when the stabilizer beams are extended. Altogether factors that increase your safety!



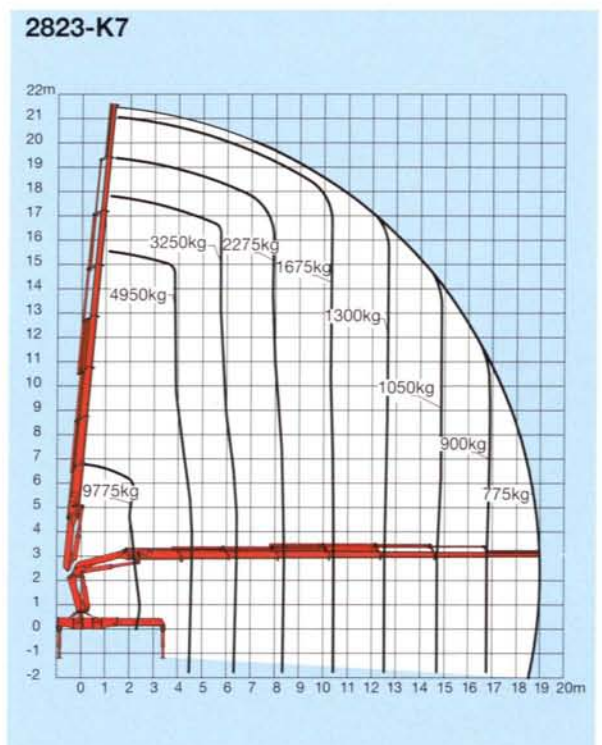
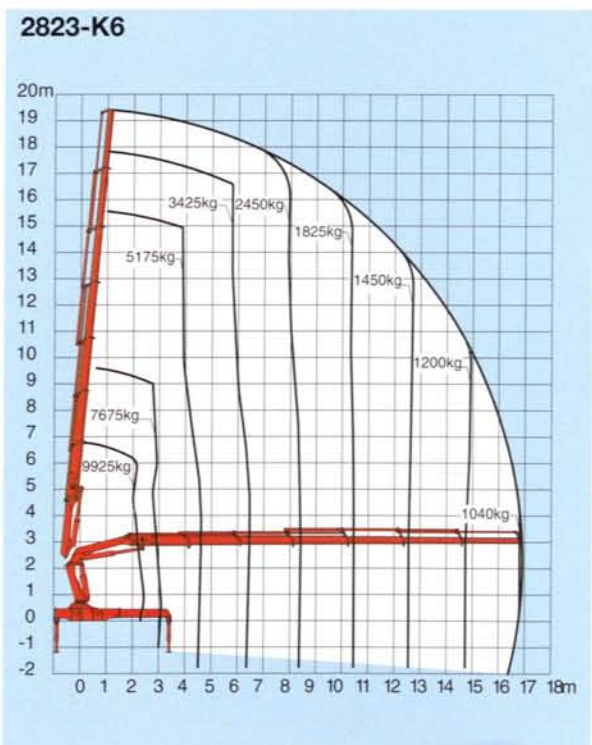
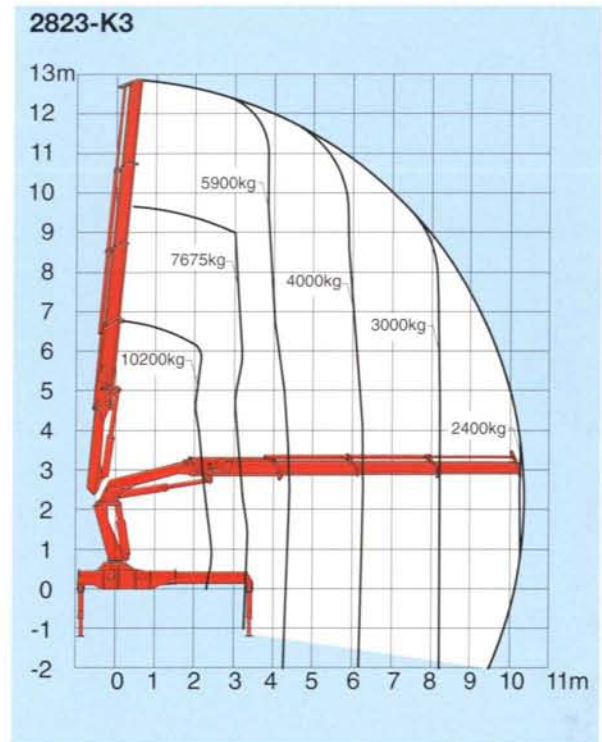
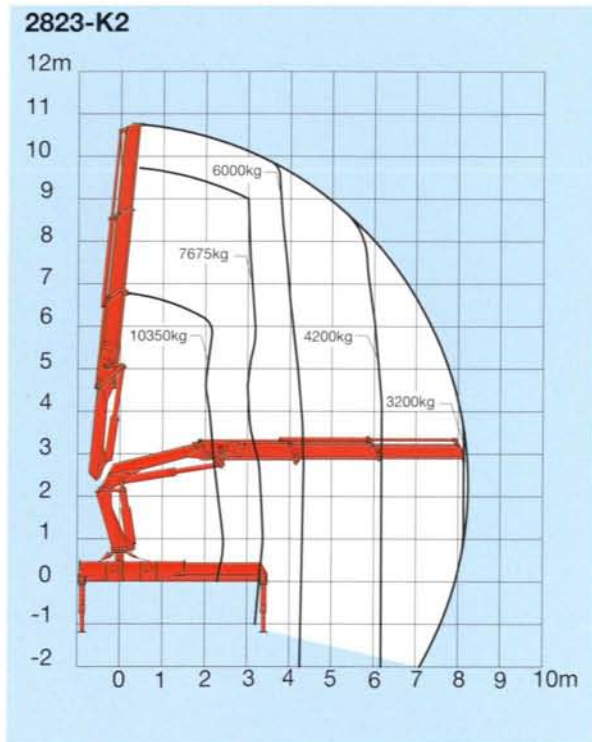
Dimension Sketch



HMF uses the most recent 3-D CAD-technology for developing new loader models. These are work shop drawings of the new Fly-Jib, FJ900, on HMF's 2500/2820 Series.



Lifting Capacity Diagrammes HM

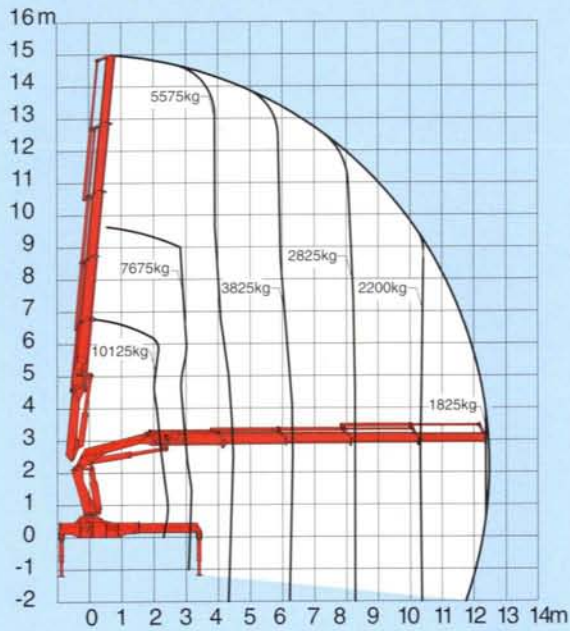


Both the HMF 2500 and 2820 are delivered as standard with a stabilizer spread of 6,200 mm. This ensures a high stability of the vehicle in the entire working area when handling heavy loads.

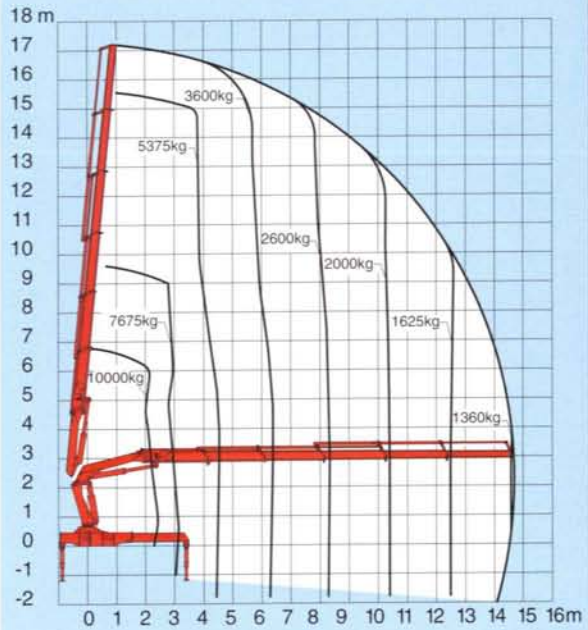
F 2820 Series



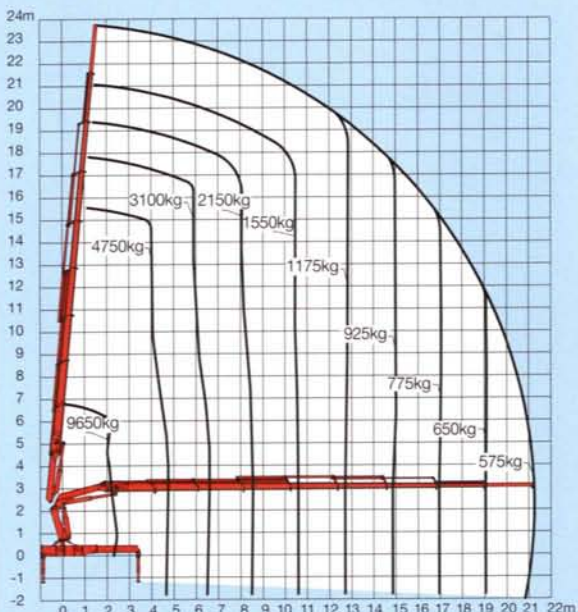
2823-K4



2823-K5



2823-K8



2823-K2

| | | | |
|----|------|------|------|
| KG | 6100 | 4250 | 3225 |
| M | 4.4 | 6.2 | 8.2 |

2823-K3

| | | | | |
|----|------|------|------|------|
| KG | 5850 | 4000 | 3000 | 2400 |
| M | 4.4 | 6.3 | 8.3 | 10.3 |

2823-K4

| | | | | | | | | | |
|----|------|------|------|------|------|------|------|------|------|
| KG | 5600 | 3825 | 2825 | 2200 | 1825 | 1400 | 1150 | 875 | 700 |
| M | 4.5 | 6.4 | 8.3 | 10.4 | 12.4 | 14.7 | 16.8 | 19.1 | 21.3 |

2823-K5

| | | | | | | | | | | |
|----|------|------|------|------|------|------|------|------|------|------|
| KG | 5375 | 3600 | 2600 | 2000 | 1625 | 1360 | 1075 | 850 | 675 | 560 |
| M | 4.6 | 6.4 | 8.4 | 10.4 | 12.5 | 14.6 | 16.8 | 19.1 | 21.3 | 23.7 |

2823-K6

| | | | | | | | | | | | |
|----|------|------|------|------|------|------|------|------|------|------|------|
| KG | 5175 | 3425 | 2450 | 1825 | 1450 | 1200 | 1040 | 800 | 673 | 525 | 400 |
| M | 4.7 | 6.5 | 8.4 | 10.5 | 12.5 | 14.7 | 16.8 | 19.1 | 21.3 | 23.7 | 26.2 |

2823-K7

| | | | | | | | | | | | |
|----|------|------|------|------|------|------|------|------|------|------|------|
| KG | 4950 | 3250 | 2275 | 1675 | 1300 | 1050 | 900 | 775 | 610 | 500 | 385 |
| M | 4.7 | 6.6 | 8.5 | 10.6 | 12.6 | 14.8 | 16.9 | 19.0 | 21.3 | 23.6 | 26.1 |

2823-K8

| | | | | | | | | | | | |
|----|------|------|------|------|------|------|------|------|------|------|------|
| KG | 4750 | 3100 | 2150 | 1550 | 1175 | 925 | 775 | 650 | 575 | 475 | 375 |
| M | 4.8 | 6.7 | 8.6 | 10.7 | 12.7 | 14.9 | 17.0 | 19.1 | 21.2 | 23.5 | 26.0 |

* Lifting capacity, no manual extensions

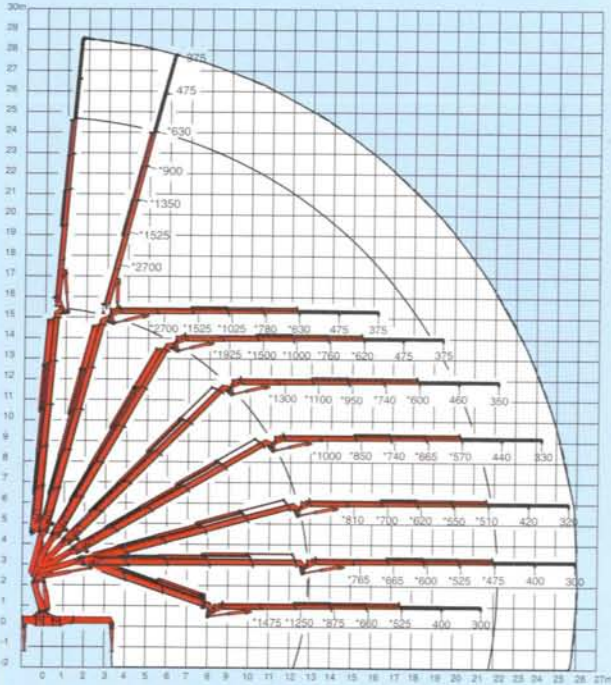


With Fly-Jib and remote control you will be able to carry out precision work, even in inaccessible locations.

Lifting Capacity Diagrammes FJ900 and FJ5



2823-K4, FJ900-K4

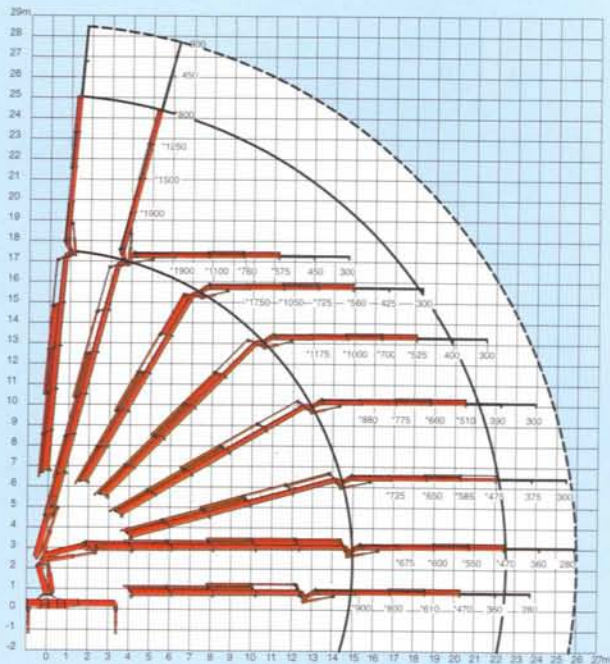


* Lifting capacity, no manual extensions



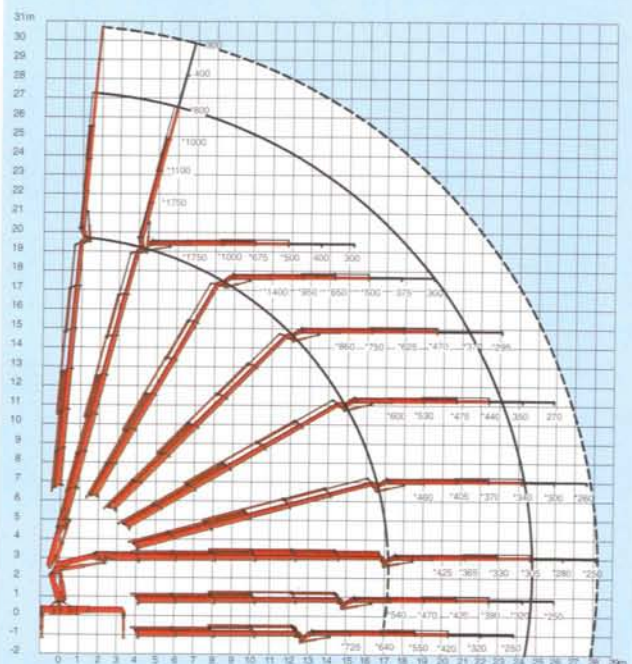
▲ HMF's 2500 and 2820 Series can be equipped with either a Fly-Jib type FJ900 or FJ5. With the FJ900 you obtain a total hydraulic reach of 22.1 metres with a lifting capacity of 475 kg and with the FJ5 the max. hydraulic reach is of 24.7 metres with a lifting capacity of 305 kg.

2823-K5, FJ5-K3



* Lifting capacity, no manual extensions

2823-K6, FJ5-K3



* Lifting capacity, no manual extensions



HMF: A Reliable Partner

HMF is amongst the world's leading manufacturers of transport hydraulics and equipment. With a total floor area of more than 70,000 square metres and over 50 years of experience HMF is able to handle the largest projects. HMF products are marketed, sold, and serviced by an extensive network of subsidiaries, dealers, and agents in more than 50 countries around the world.

HMF makes heavy demands on the manufacturing process and all HMF loaders are subjected to a rigorous test programme. On top of that, a well-assorted spare parts stock ensures a speedy delivery of spare parts.

The Highest Quality

HMF is the first truck loader manufacturer in the world to have obtained certification in accordance with the international ISO-9000 standard.

The HMF quality control system is designed to ensure a uniform standard in all HMF products and is subject to control from the certifying organization, Lloyd's Register Ltd. thus ensuring that all HMF products comply with the strict quality requirements laid down by HMF.

We reserve the right to introduce improvements and modifications



Højbjerg Maskinfabrik A/S
200, Oddervej
DK-8270 Højbjerg
Tel. +45 86 27 08 00
Fax +45 86 27 07 44